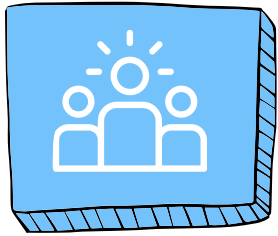
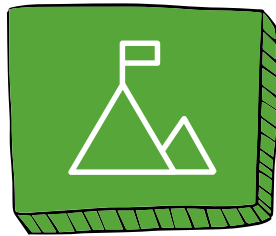


How do I make the decision to submit test scores?



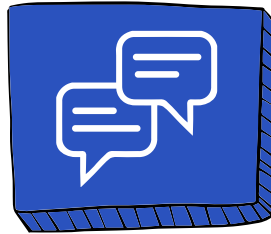
01. Data

What does the data from last year's admission cycle tell you? (Look at the middle 50%). If you are in the top 2 quartiles, it often makes the most sense to send your scores.



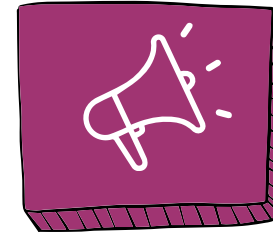
02. Determine

If you are in the 3rd quartile, consider how your scores fit in with the rest of your application? (GPA, course rigor, major, etc.)



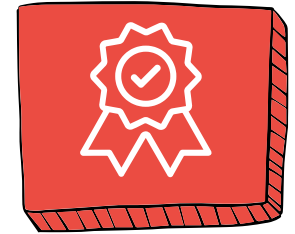
03. Ask

Are scores required to be considered for merit aid or scholarships?



04. Consider

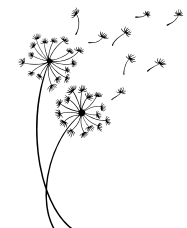
What percentage of admitted students typically submit scores?



05. Apply

You'll likely make different decisions for different schools and that is okay!

Remember, when navigating selective college admissions (schools that accept less than 30% of applicants), even students who are in the top quartile and are incredibly qualified are denied. This often has nothing to do with your decision to send (or not send) test scores.



FORGET THE RANKINGS
THE VALUES-DRIVEN COLLEGE SEARCH